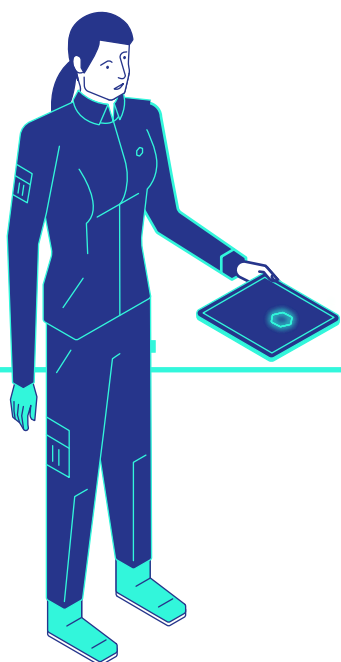


Transform is a platform of **cloud-based workforce development software and learning technologies**. It gives you all the tools you need to manage, deliver and monitor your workforce training, compliance and competency that advances safety, performance and efficiency.

Learning Technologies

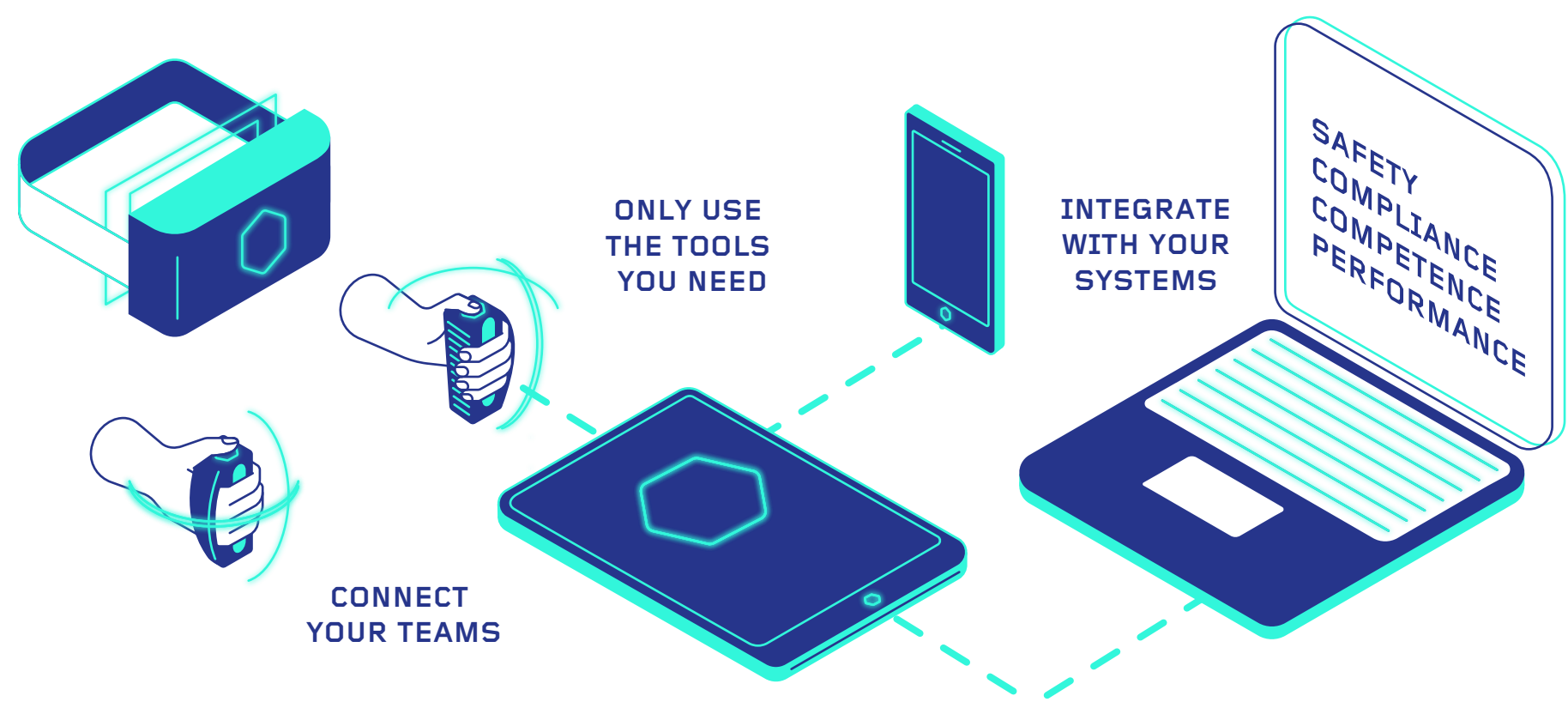
KNOWLEDGE > ENGAGE > TEST > RETAIN

- VL+ Video-learn** - Pre-recorded theory-based learning. Ideal for competence assessments. Live training options are also available
- VR VR-learn** - Immersive virtual reality learning ideal for site and safety and risk awareness inductions and knowledge building
- EL E-Learn** - online refresher and compliance courses
- R3 R3** (respond, repeat, retain) - bite-size learning workouts tailored to the workers job role and knowledge gaps. Extends the learning cycle, gamify and boost learning engagement and knowledge retention
- Si Simulators** - World-leading technology that tests and retests skills and scenarios in safety to increase competence and performance
- AR Augmented Reality** - ground-breaking immersive and engaging ways to learn processes and procedures



Complete, Connected Platform

MODULAR > FLEXIBLE > SCALABLE



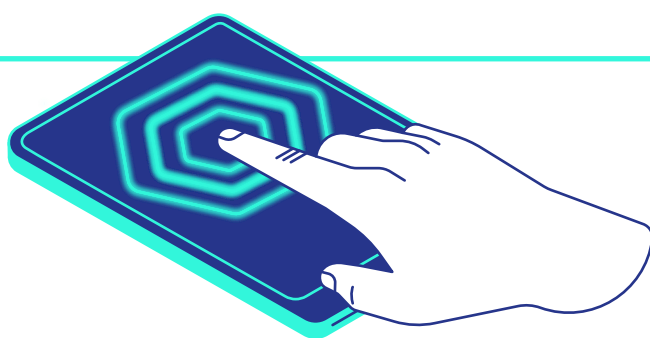
The **Global Training Marketplace** connects you with all the training and learning you need at the best price, in the right location. It offers 1000's of courses and several training delivery platforms - from instructor-led to VR.

Our **booking platform** can help training suppliers in any sector to manage their training business and delegate experience.

Cloud-based Management Software

MANAGE > ANALYSE > PERFORMANCE > INSIGHT

- SM Safety Management** - allows clients to assess risk and safety awareness of your workforce and in the future we want to manage on-the-job safety.
- TM Training Management** - analyses current and on-going job role compliance, highlight skills and knowledge gaps and allows you to book the training each worker needs to fill those gaps and become fully compliant.
- LM Learning Management** - powers the blended learning technologies - tracking progress, engagement and performance.
- CM Competence Management** - to build your competence frameworks and manage and monitor workforce competence to maximize performance and on the job efficiency.
- Bi** This all comes together to give the clients internal teams full real-time visibility of safety, compliance and competence via **Business intelligence dashboards and reporting**.



SAFETY > COMPLIANCE > COMPETENCE > PERFORMANCE > FULL VISIBILITY > INCREASE EFFICIENCY > REDUCE COSTS